

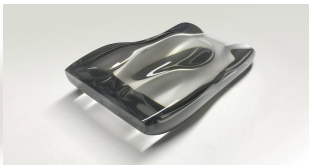
# CLASSIC DRIVER

## Five iconic automotive silhouettes that deserve a place in your home

**Lead**  
Stéphane Dufour’s sculptures already perfectly capture the forms and character of some of the world’s most iconic cars, and the effect is only increased in clear resin.



If the phrase “looking fast while standing still” ever needed explanation, then perhaps no objects in the world do a better job of it than Stéphane Dufour’s sculptures. Taking icons like the Lamborghini Miura, Porsche 917 Pink Pig, and 312P, Stéphane masterfully reduces their forms to their bare essence, resulting in beautiful sculptures that even cyclists would enjoy.



Now, Stéphane has taken it a step further, casting his minimalist sculptures in tinted clear resin, further amplifying the sense of motion about these static artworks. When applied to his 911 Watercooled sculpture, especially in transparent green, the effect seems to be multiplied - perfectly capturing the organic forms of Porsches first water-cooled sports cars. However, with so many automotive legends available, we simply can’t choose - so here are five of our favourites:

## Five automotive silhouettes we’d love to have in our homes:

Gallery







**Source URL:** <https://www.classicdriver.com/en/article/art/five-iconic-automotive-silhouettes-deserve-a-place-your-home>  
© Classic Driver. All rights reserved.